

American River Common Features Natomas Basin

Levee Improvement Project Monthly Update

APRIL 2023

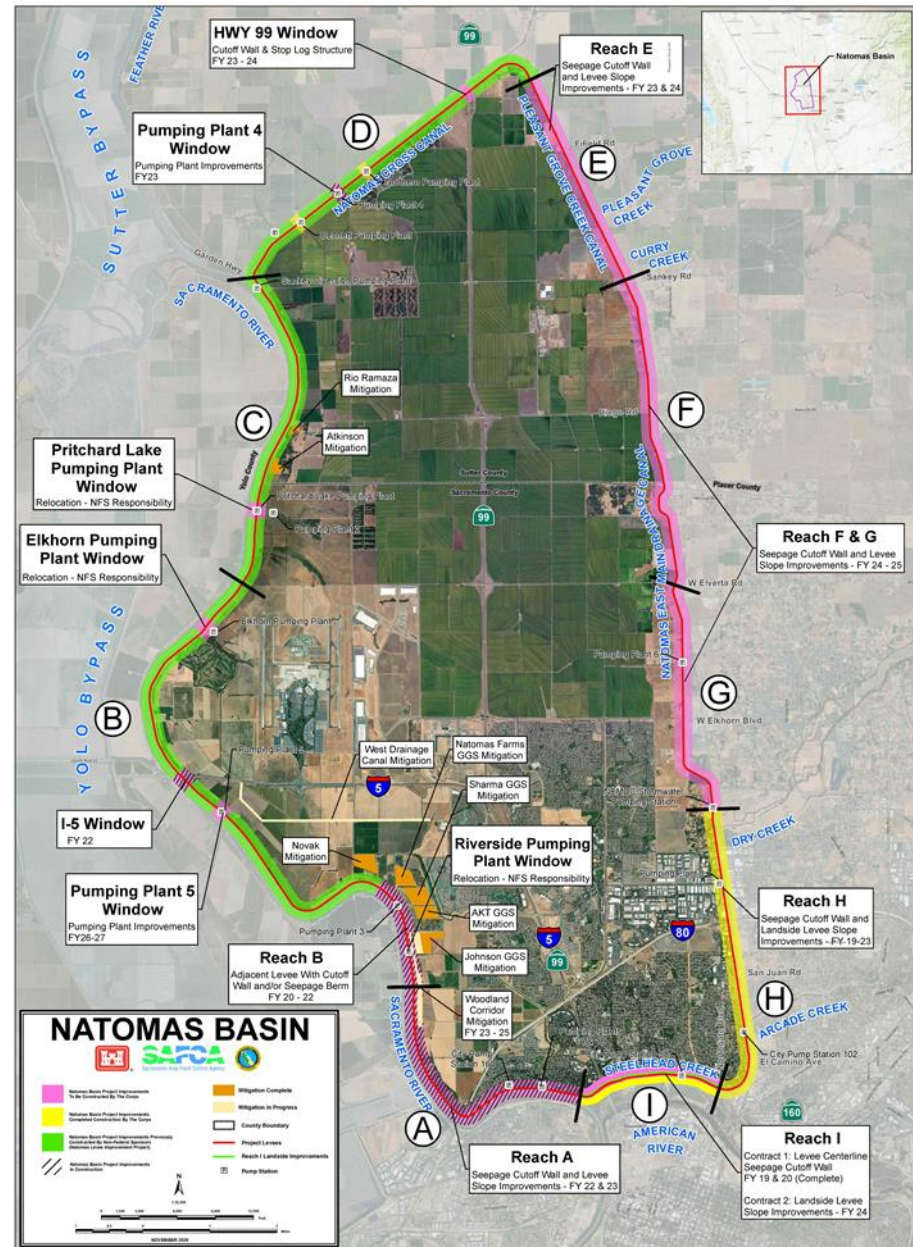


US Army Corps
of Engineers®



U.S. ARMY

REACH	SCHEDULE
Reach A Gateway Oaks Dr to Farm Rd	<ul style="list-style-type: none"> Levee construction to resume Spring of 2023 along Garden HWY starting at Farm Rd. and extending to I-80. Additional tree removal resuming Spring 2023. Overhead Utility relocations ongoing, estimated completion Fall 2023. Improvements to Pumping Plant 1B, City Sump 160 and Pumping Plant 1A anticipated to begin in 2024. <p>Visit Reach A website for the latest project news: Click here</p>
Reach B Farm Rd to Elverta Rd	<ul style="list-style-type: none"> Levee construction began July 2020; Adjacent Levee Construction is 95% complete. Final completion, including seepage berm, is expected in the Summer 2023. Irrigation canal improvements are completed. Lift station is operational but will require installation of a new air release valve in Spring 2023. I-5 Window - Construction began Summer 2022 and was declared substantially complete in January 2023. Pumping Plants: <ul style="list-style-type: none"> Pumping Plant #3 – Construction completed, and plant is operational. Relief well work is ongoing and expected to finish Spring 2023. Pumping Plant #5 - Construction expected to begin Summer 2024 Riverside Pumping Plant Replacement to begin Summer 2022 with discharge pipe relocation to begin 2024. Elkhorn Pumping Plant construction to begin 2024.
Reach C Elverta Rd to Sankey Rd	<ul style="list-style-type: none"> Levee construction was completed in 2008/2009 by Sacramento Area Flood Control Agency. Pritchard Lake Pumping Plant to begin construction in 2025.
Reach D Sankey Rd to Howsley Rd	<ul style="list-style-type: none"> Levee construction was completed in 2008/2009 by Sacramento Area Flood Control Agency. Highway 99 Window – Construction expected to begin Spring 2024. Pumping Plant #4 – Construction began August 2021; expected to be completed Fall 2023.
Reach E Howsley Rd to Sankey Rd	<ul style="list-style-type: none"> Levee construction expected to begin Spring 2023. Utility Relocations to be completed Spring 2023. Tree Removal completed.
Reach F&G Sankey Rd to Drainage Pumping Station	<ul style="list-style-type: none"> Levee construction and improvements to the levee slope and Pumping Plant #6 expected to begin Spring 2025.
Reach H Drainage Pumping Station to Northgate Blvd	<ul style="list-style-type: none"> Levee construction and improvements to Pumping Stations #8 and #102 began 2018; expected to be completed Spring 2024. Seepage berm construction to begin later Summer 2022; completion expected in the Spring 2024. Installation of concrete staircase, monitoring wells, and retaining walls underway.
Reach I Northgate Blvd to Gateway Oaks	<ul style="list-style-type: none"> Contract 1: Levee construction and improvements to Pump Station #58 completed Fall 2022. Contract 2: Landside levee improvements and installation of maintenance road expected to begin Summer 2024. <ul style="list-style-type: none"> Tree Removal efforts ongoing. Utility Relocations expected to begin in 2023.



Get the Latest Natomas Updates Here



Project Website

www.natomaslevees.com

CONTACT INFORMATION

For questions or concerns, please contact USACE Public Affairs
916.557.5100 / spk-pao@usace.army.mil



US Army Corps
of Engineers®



American River Common Features Natomas Basin

Levee Improvement Project Monthly Update

APRIL 2023



US Army Corps
of Engineers®

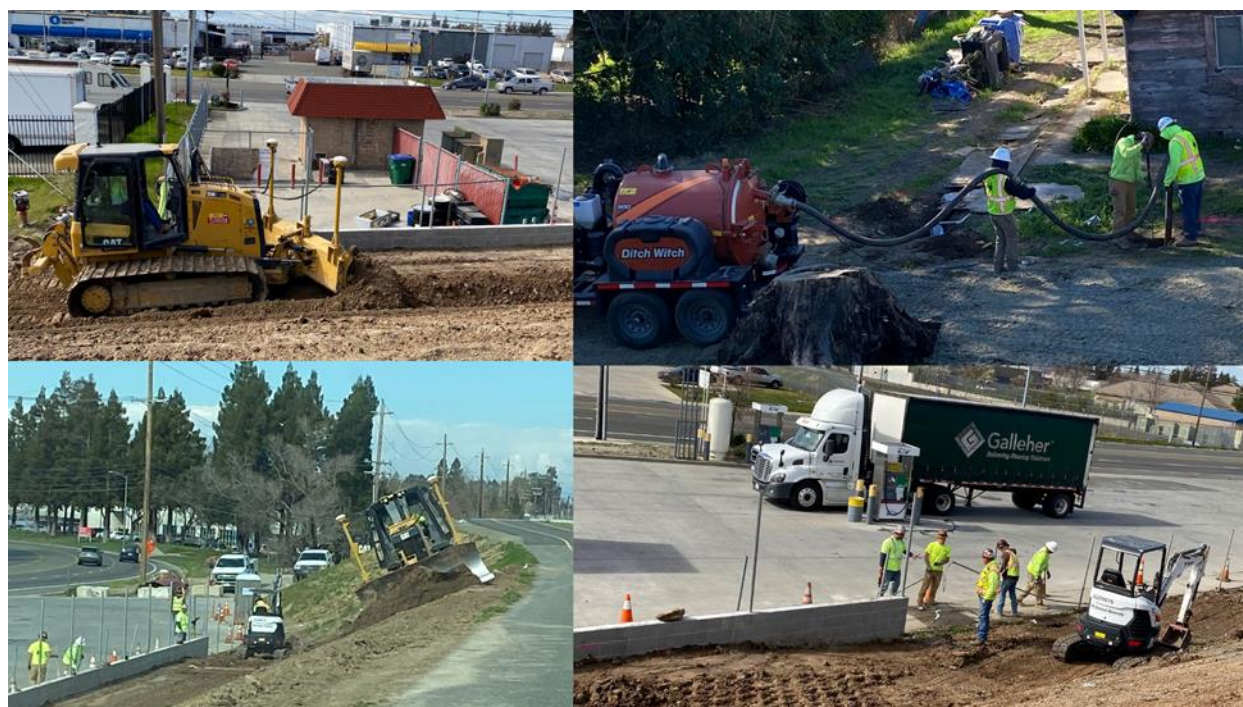


U.S. ARMY



Reach B:

Pumping Plant No. 3 Relief Well Controlled Low Strength Material
backfill



Reach H:

Levee improvements and Seepage Berm construction



US Army Corps
of Engineers®

